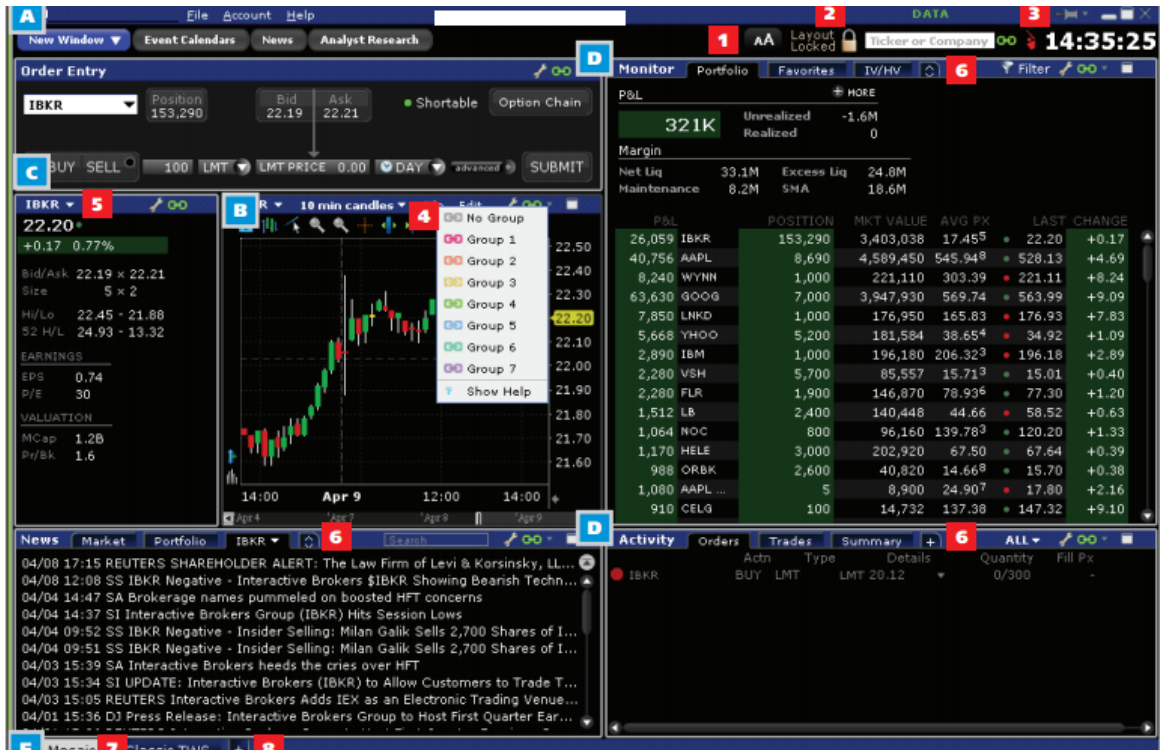


1. Download Software from the site <http://www.globalcapital.com.cy/brokerage-international/>.
2. Double click on the icon.



3. Fill in the Login details.

4. Managing the Interface



- | | |
|---|--|
| <p>A. Dashboard</p> <ol style="list-style-type: none"> 1. Font - Click to open the Font Size Adjustment box. Increase or decrease font size across the Mosaic. 2. Edit - Add, remove and rearrange windows and tools in a workspace by clicking the "Lock" icon. When you see a green outline around the entire frame, the workspace is editable. Click the "Lock" icon again to secure your changes. 3. Pin on Top - Use the pushpin icon to keep the interface on top of all desktop applications. | <p>D. Monitor/Activity</p> <ol style="list-style-type: none"> 6. Add Tabs - Click the "+" sign to add a new tab to a window when that function is available. The "+" sign changes to and up/down arrow when more tabs than shown are available.

Hold your mouse over a visible tab to see the remaining hidden tabs.

The up/down arrow has the same "add a new tab" function as the "+" sign. |
| <p>B. Charts</p> <ol style="list-style-type: none"> 4. Link by Color - Click the chain link icon to use the drop-down list. Every window linked by the same colored chain link will reflect the selected underlying. | <p>E. Workspaces</p> <ol style="list-style-type: none"> 7. Switching Workspaces - Easily switch between the Mosaic and Classic TWS layouts by clicking the appropriate workspace tab along the bottom frame. Create your own custom workspace by clicking the "+" tab. |
| <p>C. Quote Details</p> <ol style="list-style-type: none"> 5. Underlying in Blade - Many windows allow you to select or enter the underlying directly in the titlebar, or blade, of that window. | <ol style="list-style-type: none"> 8. Custom Workspaces - Add new workspaces by clicking the "+" icon along the bottom of the workspace frame. |

5. Order Management

A. Order Entry

- Populate Order Entry with a ticker symbol by:
 - Entering a ticker,
 - Choosing a previously used ticker, or
 - Clicking a ticker in a linked window such as the Watchlist.
- Click the BUY (background turns blue) or SELL (background turns red) button.
- Define order parameters:
 - Quantity,
 - Order Type,
 - Price,
 - Time in Force.

By default your Order Preset values are used. Define Order Presets in Global Configuration.
- Click "advanced" to set up stops, brackets, OCO, hedge orders and more.
- Click "advanced" to check MARGIN before transmitting.
- See your POSITION and the current Bid and Ask along the top of the Order Entry panel.
- Hold your mouse over the Shortable button to see how many shares are available to short and the current fee/rebate rates.
- Click Option Chain to see put and call options on the underlying.

B. Activity Panel

- Use the Orders tab to see:
 - All orders,
 - Working (Live) orders,
 - Cancelled orders and/or
 - Completed orders.
- Trades tab separates out all buys and sells and lets you expand to see all legs of each order.
- The Summary tab shows net trades per underlying.
- Click the "+" to add another Activity window.
- Cancel an order by clicking the CANCEL button in the order line.
- Modify an order by updating price or other parameters in the order line and clicking the yellow UPDATE button to resubmit the order.

Supported Mosaic Order Types

LMT	TRAIL	MOO	BRACKET	GTC
MKT	REL	LOO	OCO	IBALGOS
MTL	RPI	HIDDEN	AON	
STP	MOC	PROFIT-TAKER	HEDGE	
STP LMT	LOC		ICEBERG	

Populate the Order Entry Panel

File Account Help

New Window Event Calendars News Analyst Research

Order Entry

IBM Position 1,200 Bid 185.30 Ask 185.58 Shortable Option Chain

BUY SELL QTY SUBMIT

Auto-populate the Order Entry panel by selecting an underlying in a linked window, or manually enter the underlying by typing or selecting from previously used underlyings in the dropdown list

Monitor Portfolio Favorites US Movers

CONTRACT	LAST	CHANGE	%
TSLA	151.15	+0.03	0.02%
GM	41.06	+0.12	0.29%
TM	121.88	0.00	0.00%
HMC	C41.25		
AAPL	558.24	-1.85	-0.33%
IBM	185.30	+0.22	0.12%
IBKR	C24.46		

IBM INTL BUSINESS MACHINES CORP

Select the Order Side and Define Order Quantity

File Account Help

Order Entry

IBM Position 1,200 Bid 185.58 Shortable Option Chain

BUY SELL QTY SUBMIT

Click "Buy" to turn background blue; "Sell" to turn background red.

See your current position in the underlying.

Tap in the Quantity field to enter a new quantity or select a value from the wand.

1,200 POSITION
1,100
1,000
900
800
700
600
500
400
300
200
100